

WINTER 2024

# LISTEN TO THE LAKE...

Official Newsletter of the Keuka Lake Association

## A Message from the President...

BY: ROB DINTRUFF

As 2024 draws to a close, the KLA Board of Directors and Officers are taking the time to reflect on the past year and create goals for the year ahead. While each year brings changes and challenges, we remain focused on our mission of preserving and protecting Keuka Lake.

**Maintaining the water level** within a predetermined range is a challenge as we experience more frequent drought and extreme precipitation events. The KLA is consulted as actions are taken by others to adjust the outflow at the control gates in Penn Yan. Mother nature controls the inflow which is not steady and hard to predict. Experience in managing the outflow is a critical contribution of the KLA.

**Lake water sampling and testing** by the KLA, in cooperation with others, has consistently demonstrated that Keuka Lake is one of the cleanest lakes in the state. Nutrient and bacteria levels have nearly always been acceptable, but that is only part of the story. The vast volume of Keuka Lake's water reduces the concentration of contaminants flowing into the lake, but we know that "dilution is not the solution". Thus, the KLA is shifting focus and also sampling water from major streams to discover potential sources of contamination and take appropriate actions.

**Harmful Algal Blooms (HABs)** were more prevalent throughout the Finger Lakes this year. Why? Warmer spring weather? More nutrients? Calmer waters? Undoubtedly it is a combination of many factors. Our experts also tell us that new forms of cyanobacteria have evolved that can survive in cooler temperatures. The KLA and others study HABs so that we can understand them better and learn how to deal with them. Numerous dedicated volunteers assist the KLA in finding and reporting HABs. While the reported numbers indicate that Keuka Lake has fewer HABs than neighboring lakes, we won't rest on that fact.

**A new law in New York State**, effective in 2025, requires all operators of motorized vessels to obtain a license by completing a boater safety course. The KLA is helping to create awareness and encourage compliance with this new law.

The pursuit of the KLA mission can only be fulfilled with the participation and support of our members, volunteers, and generous donors to this cause. We thank you for your contributions and your trust in us to lead the way through the changes and challenges we face.

On behalf of the KLA and our Board, I wish all of you a happy and healthy holiday season and a joyous new year in 2025.

*Rob*

## THIS ISSUE:

2024 At-A-Glance

PAGE 02

Save the Dates

PAGE 04

Water Quality and the Watershed

PAGE 05

Learn to Ice Fish

PAGE 06

Winter Water Safety

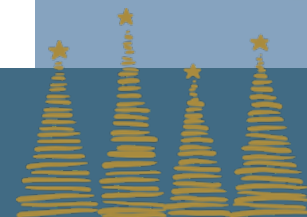
PAGE 08

Upcycle Your Tree

PAGE 10

Membership Roster

PAGE 12





# 2024 AT-A-GLANCE

## LAKE & STREAM TESTING

Our team continuously monitored water quality at several points around the lake and in major streams that flow into the lake. Lake testing results remain stable since starting the sampling over 30 years ago. Streams are being approached with closer scrutiny, as we pay close attention to inputs from the watershed.

## FECAL TESTING

We began testing for fecal coliform bacteria in the lake and streams in search of potential sources of contamination.

## HABs SHORELINE MONITORING

Sixty Shoreline Volunteers helped monitor Harmful Algal Blooms (HABs) from May through October in 62 locations. While all Finger Lakes experienced HAB's this season, Keuka has had one of the lowest incidence rates at 15 DEC-confirmed events in 2024. We celebrated our volunteers with an end of season Appreciation Party at LyonSmith Brewing.

## NAVIGATION & RECREATION

Posted flyers and signs around the lake enforcing the 5 mph within 200' law, which helps protect people and property from speeding boats.

## ADMINISTRATION

In June, we welcomed our new Executive Assistant, Kate Parsons.



## ANNUAL GOLF TOURNAMENT

In July, we partnered with Lakeside Country Club, who hosted our Annual Golf Tournament. Proceeds went towards aiding our mission of protecting and preserving Keuka Lake.

## KLA ANNUAL MEETING

We held our Annual Meeting at Keuka College on July 20th, where we heard updates from our Officers and Committee Chairs, Yates & Steuben County Sheriffs Departments, and the DEC. Our keynote presentation was from Colby Petersen of Yates County Soil & Water Conservation on Watershed Agricultural Projects.

## LAKE LEVEL MONITORING

Beyond the regular and continuous monitoring of Keuka Lake, we closely consulted with Keuka Lake Outlet Compact (KLOC) to manage the lake level during hurricane Debby in early August and returned lake to normal level within three days.

## AQUATIC INVASIVE SPECIES REMOVAL

In August, we partnered with PRISM, Yates County Soil and Water Conservation District and Saunder's Museum on an event where volunteers removed 720lbs of water chestnuts from the Keuka Outlet. The KLA recruited volunteers and hosted a relief station with snacks and drinks.

## COMMUNITY CONNECTIONS

In September, the KLA partnered with Reverb at Point of the Bluff Vineyards to promote sustainable lake living

In November, we enjoyed getting to know our neighbors with a booth at the Downtown Penn Yan Fall Festival.

# Looking Ahead To 2025

SAVE THE DATES

February 1st- Membership Renewal Begins

Monday, July 14th- Golf Tournament at Lakeside Country Club

Saturday, July 19th- Annual Meeting at Keuka College



KEEP AN EYE OUT FOR:

Our 2025 Educational Event Series

A new Membership Portal on our website

## WINTER OFFICE HOURS:

Although office hours are typically Monday & Wednesday from 10-2, holidays, meetings and weather may affect availability. Please call before stopping by!



## EVERYONE IN THE WATERSHED HAS AN INTEREST IN MAINTAINING THE WATER QUALITY OF KEUKA

SUE OLIVER, WATER QUALITY CHAIR

Curious people, new members, or perhaps those contemplating membership, visiting the KLA website probably investigate the far-left drop-down menu “about KLA” and select “Our History” to get an idea why this organization was formed. It’s a good background article and clearly defines KLA’s mission.

The topic that follows, “Area of Focus,” is a section that, to me, could use greater definition. Our entire focus is the WATERSHED. Everything that happens to and with the water once those raindrops on the highest hilltops drip toward Keuka (rather than toward Seneca or Canandaigua) ... along the streams, through the groundwater, and whatever they bring with them ... impact the quality of the water in our lake. True, KLA also scrutinizes and stays abreast of lake level, septic issues, boating safety and navigation laws and regulations, because these are all important elements of caring for the lake and maximizing enjoyment for all.

However, Keuka Lake Association is no longer a shoreline association only and hasn’t been for many years. Everyone who lives in the watershed is a stakeholder and has a vested interest in maintaining the good water quality of Keuka Lake. Environmental education teaches our children the inter-relatedness of water, business and industry, food, health, economy, and quality of life. The children care about this, and they depend on the adults in their lives to care about it, too.

How often do we take an everyday part of our lives for granted? We value Keuka for its beauty, for the peace and enjoyment it brings, as a recreational resource, for its contribution to our local economy, and, for many, as our source of drinking water. It’s right there, but we have busy lives, and we don’t always think about how important the lake is to us. We’re only human.

It takes all of us to protect this lake we value. Perhaps we could take a moment to reflect on that during this season of gratitude and giving.

If you love the lake as much as we do, please share the KLA with a friend, family member or business in the watershed! KLA Memberships make a great gift. Contact our office to put together a gift package.



# Learn How To Ice Fish

FROM NYS DEPARTMENT OF ENVIRONMENTAL CONSERVATION



Like open water angling, fishing through the ice requires skill and knowledge. But anyone can ice fish successfully if they do their homework. Learning about the water to be fished, the equipment and its capabilities, wearing proper clothing and taking safety precautions are all part of a successful, enjoyable winter ice fishing experience.

Perhaps the best way to get started is to accompany a friend or neighbor on a half-day ice fishing outing. If you are unable to locate someone to go with, the next best alternative is to visit a tackle or bait shop in a popular ice fishing area. The shop owners want you to have a successful and enjoyable trip and can provide you with all the necessary equipment. Ice anglers tend to be a highly social group, eager to share tips, techniques and stories - if you can find one, you can learn a lot.

One of the most important steps to take when ice fishing is to make sure the ice is safe. See the table on the next page for general rules to ice safety.

## WHAT TO WEAR

It is important to dress in layers. Start with a layer of material that can wick (remove) moisture from your skin. Avoid cotton clothing, which loses its insulating ability when wet. Many wind and water-resistant clothing options are available. Gore-Tex® and wool are two good material choices. Bring extra gloves, as they tend to get wet. Wear warm, waterproof boots. Add cleats to your boots to help prevent falls.

## WHERE TO ICE FISH

Most ponds and lakes offer ice fishing potential. Their characteristics define the kinds of fish that may be caught. Large, shallower ponds and lakes favor species such as chain pickerel, northern pike, yellow perch and sunfish. Deepwater lakes need to be fished selectively to get good catches of northern pike, walleye or lake trout. Brown trout, rainbow trout and landlocked salmon are frequently caught while fishing just a few feet under the ice, even in deep bodies of water.

The local tackle shop where you purchase your bait should be able to advise you on where fish are currently being caught. Online fishing forums are another good resource for choosing your next fishing destination. Regardless of the fish species that you are seeking, concentrations of anglers or the presence of many old holes will provide an indication of areas where good catches have recently occurred.

**REMEMBER, USE THE BUDDY SYSTEM WHILE ICE FISHING - IT SAVES LIVES.**

## ICE FISHING REGULATIONS

Ice fishing is permitted on many waters in New York State, but not all. Consult the freshwater fishing regulations for specific waters, as well as the general ice fishing regulations.

## ICE SHANTIES

Ice shanties must be marked on the outside with the owner's name and address in letters at least 3 inches high. Shanties must be removed from all waters by March 15 to prevent them from falling through the ice and becoming hazards to navigation.

## BAITFISH

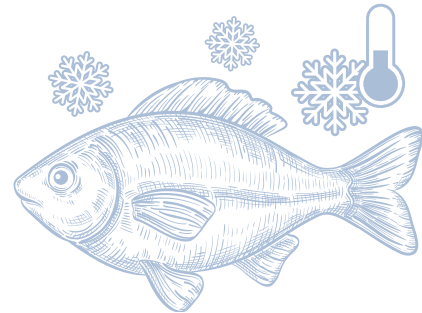
Baitfish are commonly used when ice fishing. Make sure your baitfish are certified disease free when you purchase them. Never dump unused baitfish or water from your bait bucket into a lake or pond. Undesirable aquatic invasive species might be mixed in with your bait or bait water. Consult the baitfish regulations before venturing out.

## ICE SAFETY

Safe ice should be your number one consideration when ice fishing. A minimum of three to four inches of solid ice is the general rule for safety. Ice thickness, however, is not uniform on any body of water. The guidelines presented here are based on new, clear ice on non-running waters. Since ice thickness can vary on a lake, check the ice periodically to stay safe.

**ICE THICKNESS TABLE**  
(FOR NEW, CLEAR ICE ONLY)

Ice Thickness	Permissible Load
2 inches or less	Stay Off
4 inches	Ice fishing or other activities on foot
5 inches	Snowmobile or ATV
8-12 inches	Car or small pickup
12-15 inches	Medium truck



Note: This guide is based on new, clear ice on non-running waters. Slush ice is about 50 percent weaker. Clear ice over running water is about 20 percent weaker. Double the recommendations for white ice. Many ice anglers do not like to fish on less than five inches of ice, and do not like to drive a pick-up truck on less than 15 inches of ice. Use common sense!

Be cautious in areas where "bubblers" are used to protect docks. They can produce thin, unsafe ice some distance away. Be especially alert in areas near shore, over moving bodies of water, and where streams enter and exit lakes and ponds.

# Winter Water Safety



New York State law requires anyone in a boat that is less than 21 feet long on New York waters to wear a Coast Guard-approved floatation device from November 1 to May 1.

The November to May law is primarily for those who extend the use of their watercraft into the colder season. A life jacket, particularly if it is brightly-colored, helps rescuers locate someone who has fallen into the water and may be at risk for hypothermia. A life jacket extends the opportunity for rescue and survival.

Life jackets are required year-round for children under 12, everyone on a personal watercraft, and anyone being towed by a boat.

## ELECTRIC SHOCK DROWNING

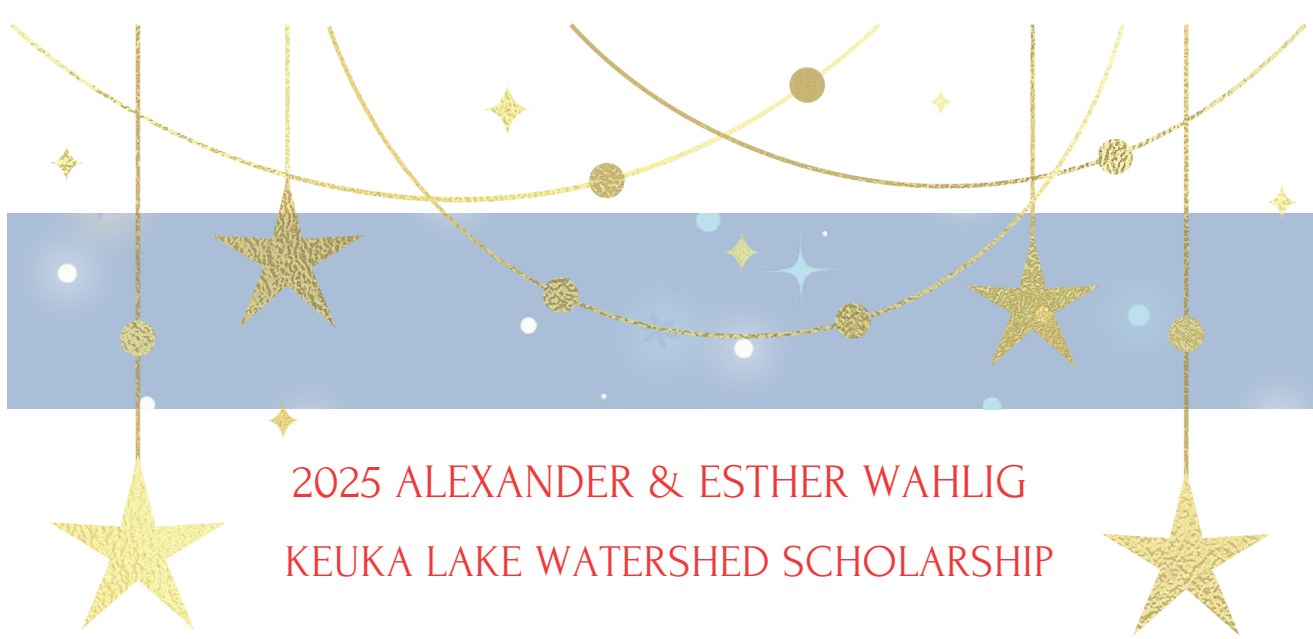
According to the Electric Shock Drowning Prevention Association, Electric Shock Drowning (ESD) occurs when a low-level alternating current (AC) flows through the body with enough intensity to cause skeletal muscular paralysis, preventing a swimmer from staying afloat and ultimately leading to drowning. ESD is more prevalent in freshwater environments than in saltwater, which makes it particularly concerning at freshwater docking facilities, marinas, lakes, and ponds. The typical ESD victim is often a child swimming near a marina or dock where electrical currents may be present. The electricity responsible for ESD typically comes from the wiring of the dock or marina, or from boats or bubblers connected to the power supply of the marina or dock.

**Private Docks:** The National Fire Protection Association (NFPA) highlights that ESD hazards can often be overlooked at lakeside homes with private docks. While these homes may not always have shore power, they might have electrically operated boat hoists or bubblers.

**Consult a licensed electrician:** The NFPA indicates that NEC Section 555.35(C) mandates GFCI protection for personnel at boat hoist outlets not exceeding 240 volts installed at dwelling unit docking facilities.

Stay Safe & Learn more: <https://www.electricshockdrowning.org/>





2025 ALEXANDER & ESTHER WAHLIG  
KEUKA LAKE WATERSHED SCHOLARSHIP

The goal of this scholarship, sponsored by the Keuka Lake Association, is to assist a graduating senior high school student who is planning to enroll in a four year program (may include a two year college with plans to transfer to a four year institution) and who is planning on pursuing a career in general environmental sciences or limnology or water quality/watershed management.

Eligible applicants include senior students graduating from high schools in the Keuka Lake Watershed, including Haverling Central School, Dundee Central School, Penn Yan Academy, Prattsburgh Central School, Hammondsport Central School or senior students whose parents are Keuka Lake Association members.

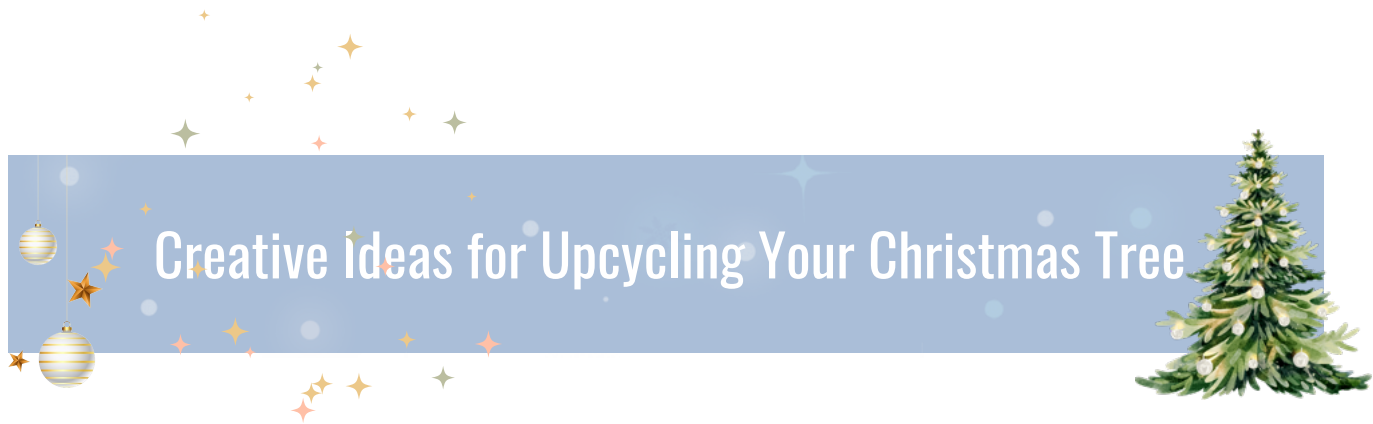
The one-time \$1000 scholarship will be awarded in one installment upon satisfactory completion of the first semester and submission of a transcript sent to the Keuka Lake Association office for review by the committee.

The selection committee is composed of five members appointed by the Keuka Lake Association and will meet in April of the student's graduating year. The committee must receive application forms by April 15th of the graduating year. By June 1st, the committee will send the selected recipient(s) a letter and forward a copy to the guidance department of the appropriate school. Students should submit an application for the scholarship to the Keuka Lake Association by mail to P. O. Box 35, Penn Yan, NY 14527.


The application must include a letter of recommendation from one of the applicant's teachers and a 250 to 300 word essay describing the student's interest in his or her selected field of study and how the student plans to apply that knowledge either in a future career or for enriching his/her appreciation in the environmental sciences or water quality/watershed management. An application is available on our website and it will be included in our March newsletter.

*Congratulations to the 2024 recipient, Lexy Wilson!,*





# Creative Ideas for Upcycling Your Christmas Tree



As the holiday season comes to a close, one common dilemma many face is what to do with the Christmas tree once the decorations come down. Instead of sending your tree to the landfill, why not give it a second life through upcycling? By reimagining your tree, you can contribute to environmental sustainability, enhance your yard, or even create practical items for your home. The Keuka Lake Association encourages everyone to think creatively about how to repurpose their Christmas trees. Here are some eco-friendly and fun ways to upcycle your tree after the holidays:

- **Bird Feeder:** Hang birdseed-filled pinecones or suet from the branches.
- **Wildlife Shelter:** Place the tree in a corner of your yard or garden, where it can provide cover for deer, rabbits, and other critters during the colder months. The tree will naturally break down over time, enriching the soil with nutrients.
- **Wooden Coasters or Picture Frames:** Slice the trunk into thin discs and use them to create coasters, picture frames, or even ornaments for next year's holiday season.
- **Rustic Wall Art:** Cut the branches into smaller sections and use them to create natural, rustic wall art or a unique wreath.
- **Candle Holders:** Use the tree's trunk to create simple, rustic candle holders by drilling holes and inserting tea lights or small candles.
- **Use as Erosion Control:** If you're near a slope or stream, a Christmas tree can help prevent soil erosion. By bundling several trees together and placing them along the bank of a waterway or on a hill, you can create a barrier that will reduce the impact of wind and water erosion.
- **Compost It:** If you have access to a composting facility or compost bin, breaking down your Christmas tree into smaller pieces can contribute valuable organic material. The needles, branches, and bark are rich in carbon, which helps balance your compost and can be added to your compost pile in the spring.
- **Tree Recycling Events:** Check with local waste management services or your town's parks department to see if they are hosting any tree recycling events. Many municipalities offer tree recycling services, turning old Christmas trees into wood chips, mulch, or compost, which can be distributed to public parks and community gardens.
- **Potpourri:** Dry the pine needles and combine them with other dried flowers or herbs for a homemade potpourri.
- **Essential Oils:** Distill pine needles into essential oils and use them for homemade candles, diffusers, or personal care products.

Upcycling your Christmas tree is a meaningful way to extend its life and reduce waste. Whether you create a sanctuary for local wildlife, enrich your garden, or try your hand at crafting, there are endless possibilities for reusing your tree in creative and sustainable ways. By upcycling, you help ensure that the natural beauty of the Finger Lakes region remains protected for generations to come.



# KLA DIRECTORS & OFFICERS

**PRESIDENT**  
ROB DINTRUFF

**VICE PRESIDENT**  
SUSAN OLIVER

**TREASURER**  
JIM HORNER

**SECRETARY**  
KATE PARSONS

**AT- LARGE**  
JEANNE ESTEP  
RORY LONG

**PULTENEY**  
DOUG DEFRANCO  
JIM HOWITT

**BARRINGTON**  
SEEKINGCANDIDATE

**URBANA**  
DARRYL HECKLE  
NOLAN SMITH

**JERUSALEM**  
STEVE HELLER  
BOB LAMBERT

**WAYNE**  
WAYNE HAND

**MILO**  
BOB KARCEWSKI  
BILL LAFFIN

*happy holidays*

The KLA is always looking for individuals who share our passion for protecting the lake! Email Resumes to [info@keukalakeassociation.org](mailto:info@keukalakeassociation.org).



Thank you!

## 2024 KLA BUSINESS MEMBERS

### ACCOUNTANTS FINANCIALS/CONSULTING

Bailey Business Advisors  
Commonwealth Financial Group  
Eastlake Consulting  
Hayes Asset Management, LLC

### ARCHITECT

Patrick Flynn

### ATTORNEYS

William Fletcher  
William Reed  
Carl Schwartz

### BOOKS/OFFICE SUPPLIES/CARDS

Longs' Cards & Books

### BUILDING/PLUMBING/ ELEC. SUPPLIES/WELLS

Carey's Farm & Home Centers  
HEP Sales  
Knapp & Schlappi Lumber Co., Inc.  
Koala Insulation of the Southern Tier  
Shirley's of Bath, Inc.

### COMPUTER/GRAPHIC SERVICES

SCT Computers  
DSD Webworks

### CONSTRUCTION/ARCHITECTURE/ PAINTING/CONTRACTORS

**DJ Builders**  
Scott Desjarlais Contracting  
Swagelok Western NY  
Timber Frames, Inc.

### EDUCATIONAL/INFORMATIVE

Cornell Cooperative Extension - Yates  
Keuka College

### ENGINEERS/SURVEYORS

Kernahan Engineers  
KV Engineering, PLLC

### FOOD SERVICES

Crooked Lake Mercantile  
Morgan's Grocery

### GIFTS/CLOTHING

Cinnamon Stick  
Crooked Lake Mercantile  
Keuka Clothing  
Longs' Cards & Books

### HANDYMAN SERVICES

Ace Handyman

### HEALTH/MEDICAL SERVICES

Keuka Comfort Care Home  
Lattimore Physical Therapy

### COMMUNICATIONS/SECURITY

Convergent Telecom, Inc.  
Covert Security

### INSURANCE

Keuka Insurance Group, Inc.  
Stork Insurance

### LANDSCAPING/NURSERY/GARDENING

Beers Tree Service  
Meyers Contracting

### LODGING/COTTAGE RENTALS

Keuka Beach House Rental  
Keuka Lakeside Inn  
The Cottages on Keuka

### MARINE SERVICES/SUPPLIES/DOCKS

Big Al's Boats  
The Boathouse Keuka  
Brawdy Marine Construction, Inc.  
Dennis Marine-Canandaigua  
Fingle1  
Harbor Lights Marina  
Keuka Pontoon Rentals  
Mark's Leisure Time Marine  
Meyers RV & Marine  
Morgan Marine  
Quality Docks  
R & R Docks  
Veley Enterprises-Steve Veley

### PEST CONTROL

Custom Pest Control, LLC

### REAL ESTATE SALES RENTALS/DEVELOPMENT

Brie Kirk - Wine Trail Properties  
Camp Arey  
Curbeau Realty-Bonnie & Dick Curbeau  
Howard Hanna Lake Group—Penn Yan  
& Hammondsport  
Howard Hanna Realty- Ken Frank  
Howard Hanna Realty -Michael Hanna  
Keuka Lake Land & Realty  
Kurt Schmidt—Century 21  
Mark Malcolm II - Century 21  
Marcia Rees - Century 21

### RECREATIONAL/MUSEUMS/ARTS

Finger Lakes Boating Museum  
Saunders' Finger Lakes Museum  
Fishy Business  
Lakeside Country Club  
Shoreline Outdoor Rentals

### RESTAURANTS/SNACKS

Burgers & Beer of Hammondsport  
Lakeside Country Club  
Lakeside Restaurant & Tavern

### STORAGE FACILITIES

Camp Arey Mini Storage

### VETERINARY

Eastview Veterinary Clinic

### WINERIES/VINEYARDS

Barrington Cellars-Ken & Eileen Farnan  
Bully Hill Vineyards  
Doyle Vineyard Management  
Dr. Konstantin Frank Wine Cellars  
Hunt Country Vineyards  
Keuka Lake Vineyards  
Keuka Spring Vineyards  
Living Roots Wine & Co.  
McGregor Vineyard Winery



Thank  
you!

## KLA Membership Roster 2024



The Keuka Lake Association gratefully acknowledges the following individuals, businesses and foundations whose generosity and support have enabled the KLA to execute its on-going mission to preserve and protect Keuka Lake for generations.

### PREMIER (\$1000+)

Lisa & Bill Ackerman  
Steven & Betty Brigham  
D. Scott Demmin

Robert Dintruff  
Chris & Darryl Heckle  
Bill & Mary-Ellen Laffin

Rick & Wendy Moore  
Valerie Newell  
Scott Sproule

### CHAMPION (\$500+)

Ackerman Family  
Larry & Susan Aiello  
Jacklinn Carpenter  
Jean & Alan Carpenter  
Bonnie & Dick Curbeau  
Sue & Joe DeGeorge  
Pete & Trish DeSocio  
Caren & Robert Douenias  
Suzanne Edlund  
Dr. Gerry & Mrs. Annette Gacioch  
Tom & Nancy Garlick  
Andy & Tina Glanzman  
Michael and Rita Gow

Bill & Susan Hanley  
Keuka Comfort Care Home  
Jim & Anne Horner  
James Howitt & Rita Griffin-Shroyer  
Peter Krog  
Gregg & Susan Layer  
Thom & Karen Love  
Bruce McConnell & Joanne Jaeger  
James & Deborah Odorczyk  
Mariola Poss  
Thomas & Katherine Roehlke  
Ronald & Deanna Ross  
Georgia & Chris Rossi

Karen Schaefer  
William & Patricia Schirmer  
Robert & Rosemary Schnorr  
Raj & Adrienne Shah  
Karen Meriwether & Tom Snow  
Martha & Dave Swift  
Jean & Roger Thompson  
Robert & Margaret Tranbaugh  
Vincent & Josephine Valicenti  
Barb & Kirk Vieselmeyer  
Peg & Craig Wilson  
Les & Wanda Wood





Thank  
you!

# KLA Membership Roster 2024

## GUARDIAN (\$250+)

Ann & Russ Acevedo  
 Gary & Linda Acker  
 Lee & Yolanda Adrean  
 Rick & Diane Amundson  
 Pierce Baker  
 Kevin & Christina Bennett  
 Thomas & Barbara Blumer  
 Jim & Judy Brooks  
 Gary Brown  
 John & Barbara Bruning  
 Camp Arey, Inc.  
 Michael & Cathleen Cardillo  
 Mike & Anne Carney  
 Dan & Linda Carp  
 Peter & Susan Carter  
 Audrey Christiansen & Terry  
 Johnson  
 Robert Cole & Marie McKee  
 Tom & Joan Cole  
 Frank & Mary Condella  
 Gordon & Lucy Cook  
 Rick & Brenda Copp  
 Rob & Sharon Corcoran  
 Cost Family LLC  
 Hank & Betsy Dalrymple  
 Mark & Kim Dewey  
 Steve & Michele DiMarzo  
 Alan & Lynette Eusden  
 Kim & Barry Evans  
 Mr. Neil Fagan  
 William & Nancy Feinstein

Caryl Flickinger  
 Nat & Jeannine Garfield  
 Judith M. Goehring  
 Sue Goodrich  
 The John Gough Family  
 Kirk & Penelope Gregg  
 Grossmann's  
 John & Diane Hagreen  
 Monica & William Henderson  
 Sarah & Murray Hestley  
 Thomas & Shelley Hilfiker  
 Tom & Patti Hinman  
 Bob & Jean Hood  
 James W. Hovey  
 Laura Hunt & Gary Hill  
 Michael & Cheryl Jackson  
 Terry & Sallie Jensen  
 Nicholas & Barbara Juskiw  
 Bob & Maribeth Lambert  
 Lee & Lillian Larkin  
 Larry & Dale Ledgerwood  
 Joe & Ann LeFebvre  
 Ray & Anne Leinen  
 Tim & Cathy Lipari  
 John & Karen Madison  
 Walter McCauley  
 Charles R. & Victoria A. McClure  
 Dr. Frank Midgley & Sally Brown  
 Frank Montes  
 Joan & Jim Moore

Nancy & Sandy Morgan  
 Michael & Christine O'Brien  
 Gary & Nancy Olin  
 Susan Oliver  
 Dr. Sam & Terry Pennise  
 Michael J. Quinn  
 Keith Reas & Tomas Hernandez  
 Paul A. Reeder, III  
 Fred & Barbara Risser  
 Jacob & Jessica Rothfuss  
 Mike Russell  
 Nicole & Kyle Sayers  
 Pamela Schneider  
 William Schoff  
 Ann & Robert Simunek  
 Donna & Roy Smith  
 Nolan & Kim Smith  
 Rob & Pam Steigerwald  
 Mark & Emily Stenta  
 Bob & Gayle Stiles  
 Jim & Ellen Stork  
 Barbara Strong  
 Tim Tighe  
 Gene & Peggy Wade  
 Don Walker  
 Elizabeth & George Welch Sr.  
 Robert A. Woodhouse  
 Mary Worth & Dick Murphy  
 Dr. Daniel & Roberta Zedeker

## PATRON (\$150)

Timothy Abbamonte  
 Larry & Yvonne Albee  
 Michael Amoruso  
 Philip & Nancy Bailey  
 Ruth Barry  
 Lisa Bartlett  
 Jen Batzing  
 Ron Bellohusen  
 Jill & Jim Bird  
 Larry & Carol Blair  
 David, Alan & Dan Box  
 Barry S. & Donna K. Brenner  
 GrandView  
 Allen & Glenda Childs  
 Rich & Lisa Coffin  
 Mark Cohick  
 Russell & Judy Cranston

Gene & Lynn Cummings  
 Erin & Anthony Daniele  
 Rick & Karen Darcangelo  
 Mark & Maureen Davitt  
 Doug & Megan DeFranco  
 Chris & Mike Deschamps  
 Megan DiNicolantonio  
 Jason Dunn & Robin Adair  
 Diane Edwards  
 Ekimoff Family  
 Gary & Dorothy Emmick  
 David & Marcia English  
 Lynda Erkiletian  
 Thomas Burean & Deborah Ettington  
 Dr. & Mrs. Charles R. Fedele  
 Bill & Mary Flynn  
 Catherine & Mark Foerster

Ed & Kelly Gilligan  
 Dean & Theresa Godshall  
 Keuka Lake Vineyards  
 Chuck & Mary Goodfellow  
 Bill & Rhonda Goodrich  
 Arthur & Nora Goodwin  
 Donald & Alice Gottschall  
 Chris & Kathleen Graham  
 Mike & Dawn Grosser  
 Joel & Leslie Grover  
 Mark & Karen Hagan  
 Linda & Jerry Haley  
 William & Donna Hatch  
 Hayes Asset Management -  
 Chris & Lisa Hayes  
 Aubrey & Paul Hess  
 Steve & Mandy Hicks



Thank  
you!

## KLA Membership Roster 2024



### PATRON (\$150+)

Mike & Amy Holloway  
Wayne & Judy Holly  
Tom & Nancy Howitt  
Karin & Peter Howland  
Maria & William Hudson  
Elizabeth & Paul Jordan  
Beth & Henk Keesom  
Art & Beverly Kirk  
Todd & Violetta Koneski  
Matthew & Mary Jo Korona  
John & Carol Kuehn  
William & Jane Kufra  
Xavier Lafosse  
Brian Lally  
William & Mary Lane  
Gary LaRusso & Beth Cooper  
Anne & Steve Leach  
Kenneth & Jeanne Lill  
Jim & Bunnie Lynch  
Neil & Alisa MacAvoy  
Martin Mahoney  
Deborah Martin  
McClintock Family  
Nancy McConnell & C. William Champlin  
John & Janet McLaughlin  
Fletcher & Margo McTaggart  
Robert & Kathleen Meriwether

Don & Kathleen Miller  
Nicholas & Mindy Misnick  
Lynne Shoemaker & Richard Moyle  
Richard & Patricia Mulcahy  
Keith Mulvihill  
Mark & Mary Nielsen  
Sue Evans Norris  
Terence & Sandra O'Rourke  
Daniel & Kelly O'Shea  
Jim & Marsha Oenick  
Nancy & Philip Olin  
Monique & Michael Page  
Francis Pallischeck  
Allen & Jane Pardee  
Laura Paul  
Patricia Pautz  
Dale & Barbara Pedersen  
Jens Pfeffer  
Ed & Judy Piotrowski  
Tom & Susan Rainey  
Keith Reas & Faye Gardner  
Tom & Betty Richards  
Philip & Brenda Roche  
Richard & Peggy Rockwell  
David & Julie Ronner  
Richard Rosenberg & Margot Bliven  
Elise Rosenfeld

Lynne Royer & Bruce Saldinger  
Daniel & Martha Ruffo  
John J. Ryan, Jr.  
Barnwell/Salomons  
Jessica Savage  
Don & Diana Schneider  
Steven A. Sisson  
Rusty & Eiron Smith  
Gloria & Bob Stoneham  
Steve & Susan Stork  
Ethan & Rebecca Stryker  
DOUG 'N' ARIANNE  
Tom & Beth Tranter  
Jim Trezise  
Tom & Marion Tunney  
Charles & Susan Vacanti  
Jim & Karen Vari  
Pete & Beth Wasson  
Geoff & Jane Weaver  
Claudia & Porter Welbourne  
Merle & Janice Whitehead  
Doug & Tami Willard  
Jim & Joan Wilson  
Terrence & Barbara Woodworth  
Carol Worth & Rob Schwarting  
Lee & Julie Wortham  
Bill & Pat Yarbrough  
Tom & Tracey Yorio

### SPONSOR (\$100+)

Tim & Sally Acomb  
Ayesha Almeida  
David & Wendy Altamura  
Bill & Lynn Anderson  
William Angell  
Kevin Ayers & Ann Gupta  
Robert & Laurie Babcock  
Sue & Kevin Bader  
Noreen & Chris Bailey  
Donald & Jane C. Banzhaf  
Charles & Jennifer Bastian  
David & Veronica Baum  
Judy Baxter  
Brian & Sharon Beach  
Theodore Bedell  
Ros & Mike Bell  
Louis & Nancy Bellina

Ronald Bernard & Judith Woll  
Peter & Beth Bird  
Teresa Blume  
Tom Blythe  
Scott & Cynthia Bobo  
Amy J. Borglum  
Dr. James & Lisa Bothwell  
Robert & Linda Bowditch  
Howard Bozenhard  
Edwin & Carol Braunstein  
Leo & Kathleen Brideau  
Joe & Cathy Bringley  
Bill & Susan Brodine  
Dan Bronk  
Lee Brooks  
Todd & Kimberly Brost  
Carol Brusso-Opitz

Jack & Dottie Buonocore  
Jane & Dan Burke  
Lawrence D. Burns  
Andrew M. Butler  
Tom & Lisa Capek  
Joe & Laurie Cardillo  
Pamela Carlson  
Rick & Linda Carr  
Gloria Carroll  
Mary Lois Carroll c/o Lois Spreen  
Rafael & Karna Cestero  
Stephen & Deborah Chiles  
Choi Family  
Ursula & Keith Clark  
Dave & Monica Cleveland  
Stephen & Stephanie Cohen  
Dr. Robert E. & Jo Ann Cole





Thank you!

## KLA Membership Roster 2024

### SPONSOR (\$100+)

Meg & Tom Cole  
 Warren Cole  
 John & Jeanette Collins  
 Donald Comstock  
 John & Linda Confer  
 Jim & Lisa Connolly  
 Steve Coole  
 Jan & Jim Corning  
 Covert Security, Inc.  
 Doug & Lori Crawford  
 Beth & Matthew Dann  
 Mrs. Janet S. Darrow  
 Stephen & Carol Darrow  
 Dr. Martin Davis  
 Richard & Elizabeth Day  
 Brad & Cheryl Deaton  
 David & JoAnn Deisenroth  
 Skip & Ginny Deneka  
 Kathleen DeRico  
 Andrew & Susan Desorbo  
 Katie & Larry Dewine  
 Victoria & Roger Dick  
 Candy & Bob Dietrich  
 Robin & Steve Dillon  
 John & Sherri Dobbins  
 Michael Dolan  
 Susanne & Frank Dombrowski  
 David Dowler  
 Bruce & Maureen Dowzycki  
 Scott & MaryBeth Drake  
 Paul Dreher  
 David & Nancy Jo Drum  
 Bob & Barb Duffy  
 James & Cornelia Eichorn  
 Thomas N Eichorn  
 Frank & Patricia Elliott  
 Mary Ellis  
 Ken & Mary Joan Ellison  
 Bruce & Solveig Erway  
 Matthew & Jeanne Estep  
 Richard & Barbara Felber  
 Frank H. Ferris  
 MaryAlice Fish  
 David & Margie Fisk  
 Bill & Mary Fletcher  
 Thomas Flood  
 Mary Foster  
 Tom & Shona Freeman  
 Jonathan Friedberg  
 Marianne Furfure

Liz & Jeff Gabel  
 R. John Looney & Nancy Gadziala  
 Peter & Mary Beth Gamba  
 Lou Ann Geniviva  
 Frederick Francis Geyer  
 Jeff & Wendy Gifford  
 Jack & Maureen Gladke  
 Ira & Sherry Goldman  
 Fred Goossen & Susan Murray  
 Rick & Kim Gordon  
 Roger Graham  
 Michael & Paula Grant  
 Pamela Gratzler Bornholdt  
 Paul & Ellen Greendyk  
 Marilyn Grigsby  
 Patricia Grow  
 Gabriel & Kasandra Hajde  
 Steve & Karen Hale  
 John & Kathy Halstead  
 Jim Hartney  
 Chris & Julie Hawk  
 Bob & Kathleen Heinig  
 Dawn & Bill Heller  
 Steve & Susan Heller  
 Brent & Joyce Hill  
 Eileen Holliday  
 Cliff & Wendy Holly  
 Holmes Family  
 Sandy & Jane Honeyman  
 Lin & Cindy Hough  
 Eugene & Christine Hunt  
 Michael & Meredith Hurley  
 Greg & Donna Hurst  
 Theodore & Stacey Illi  
 Virginia Illi  
 Linda Jacoby & Steve Densberger  
 Chris & Karen Johnson  
 Dan & Kim Johnson  
 Dion & Suzie Johnson  
 Nancy & Craig Johnson  
 David & Rosemary Jones  
 Jim & Deb Joyce  
 Lesley & Bob Karczewski  
 Patricia G. Keane  
 Ann & Mike Kelly  
 Carolyn Meyers Kenjarski  
 Gerald Kernahan  
 Steve & Paula Kieffer  
 Thomas & Katie Killigrew

Bob & Jamie King  
 Harry & Lillian Kinney  
 Deb Koen & Bob Beckwith  
 Jim & Nancy Koester  
 Judith W Komer  
 Warren & Heidi Kozireski  
 Nils Peterson & Jen Kuhl-Peterson  
 Dan Kummerow  
 Harold & Christine Kurland  
 Richard Lampe  
 Adele Lanahan  
 Anita Lane  
 Diane & James Leitgeb  
 Kenneth & Jill Lerch  
 John & Amy Leslie  
 Elmer & Marilyn Letts  
 Nancy & Howard LeVant  
 Jay & Catherine Liles  
 Kathy Little  
 Mark & Glenda Lockard  
 Robert & Linda Locke  
 Steve & Tanya Loomis  
 Shirley Lumpkin  
 John & Linda Dieffenbach Lundy  
 Jeffrey Lyness  
 Deborah A. Mack  
 Sharon & William Mack  
 Anne & Garry Mackiewicz  
 Gerald & Jeanne Madden  
 Michael & Nancy Magee  
 Michael Magoon  
 Bill & Alise Mahr  
 Jill & Anthony Maiola  
 William T. Mandeville  
 Bill & Marilyn Manning  
 John & Rose Marshall  
 Stan & Kay Martin  
 Laurie & Faheem Masood  
 Jim & Kathleen McCormick  
 Larry & Docie McCormick  
 Donna & Steve McDonnell  
 Ron Burke & Carol McGill  
 Jim & Ann McMullen  
 Joseph Meade, III  
 Duane Mellor  
 Peter Merrill & Maria Kastrinakis  
 David & Nancy Mest  
 Alfred & Carol Michaelson  
 Jim & Sarah Michaelson





Thank  
you!

## KLA Membership Roster 2024



### SPONSOR (\$100+)

Paul & Nancy Middlebrook  
Kim & Greg Miller  
Scott & Susan Miller  
Mark Mitchell  
Jan & Joe Monago  
Chris & Beth Mooney  
Susan Moore  
Mark & Sue Morris  
Mike & Donna Necci  
David & Christine Neff  
Keith & Lori Nickoloff  
Nick & Lisa Norvell  
Donna Noteware  
Ken & Jean Nykiel  
William Oben  
Fred & Susan Orchard  
Nola & David Peare  
Joyce & Tom Pearson  
Gerald Pease & Joanne Conley-Pease  
Bill & Donell Peck  
Peter Peck  
Susan Peck  
Michael & Virginia Penepent  
Lysle Perry  
Jeanne Peterson  
Toni Peterson & Robert Rumphrey  
John Phelan Family  
The Phillips  
David & Barbara Pinckney  
Karen & Stephen Pollak  
Mike & Stephanie Powlin  
Judd Prozeller  
John & Anne Quashnoc  
Pat Rafalowski  
Michael & Nancy Rees  
Les Reimsnyder III  
John & Laura Reindl

Abby & Josh Reinhard  
Nancy Rembaum & Steve Knapp  
Gavin Reynolds  
Les & Joyce Rhode  
R. Baxter & Elizabeth Rhodes  
Peter & Anne Richardson  
Kevin & Kathy Ring  
Gary & Susan Riopko  
Dr. Les & Sheryl Rosenbloom  
Robert & Martha Ross  
James & Ellen Route  
Robert Rullan  
Alexander & Rachel Ryan  
Marc & Carollyn Rycroft  
Richard & Phyllis Rynone  
Pamela & Alison Sale  
Robert H. Scharf  
Richard & DeAnn Schenkel  
Kurt & Brenda Schmidt  
Jim & Julie Schwartz  
Barbara Scudder  
Gary & Ann Shope  
Richard & JoAnn Shore  
Matt & Bonnie Shortino  
Harris & Joanne Silver  
Ruth & Steve Silver  
Daren & Julie Simmons  
Al & Carolie Simone  
Douglas & Miki Smith  
Richard & Joanne Smith  
Thomas G. Smith & Louise Spinelli  
Stephan & Susan Sosik  
Mike & Donna Spaziani  
Bruce & Donna Spector  
Bill & Peggie Spies  
Fran & John Springer  
Sam & Vicki Stea  
Stone Family Trust  
Barb Yunis & Jeff Streeter  
Harry & Joan Strong

Fred & Penny Tanneberger  
Teresa Test & Tom Spearing  
Chip & Jamie Testa  
Rick & Jean Thompson  
Mark & Anne Tiberio  
Jennifer Toole  
Joseph Topichak  
Tony & Mary Tripeny  
Christine Tunney  
Virginia Turner & Jamie Sisson  
Bruce & Charmaine Ushkow  
Allen & Susan Vaala  
Lynn Vacanti & John Gilroy  
Charles J. Vacanti III  
John & Tammy Vakiener  
Dick & Lindy Van Brunt  
Richard Van Etten  
Rob & Peggy Wackerman  
Joyce Wahlig  
Ernie & Connie Walker  
Gary & Kathy Wallace  
John & Cathy Walton  
Larry & Sherry Ward  
Cheryl Warner  
James Webb & Diane Legendre  
John & Dina Weber  
L. John & Beverly A. Webster  
Tim & Ellen Webster  
Michael & Ann Whitney  
Thomas & Roberta Williams  
Judith M. Wiltberger  
Joan M. Winters  
Bernadette Ervin & Steven  
Woodhouse  
William J. Woodruff  
Bob & Carol Worden  
Ginny & Tom Yost  
Barb & Dave Zimmer  
Glenn & Nancy Zwetsch





## KLA Membership Roster 2024

### PARTNER (\$50+)

Ward & Nancy Abbett  
Mike & Pat Abbott  
William & Norma Abel  
Wayne & Faye Ackart  
Mark & Cindy Ackley  
Ken & Dianne Ake  
Keith & Linda Alexander  
Barbara Allardice  
Debbie & Kim Allen  
Brian & Christine Alsford  
Jeff & Julie Amsden  
David & Kristin Anticuar  
Steven Aroesty  
Karen & Walt Atkison  
Ken Backer  
Chris & Patti Baechler  
Carolynn & James Baer  
Martin & Wonneta Bailey  
Tom & Hannelore Bailey  
Michael & Darla Baird  
Peter H. Baker  
Joseph C. Banach  
Bill Banaszewski & Michele Howland  
Ed & Dawn Baranowycz  
Patricia Barden  
Paul & Maria Barden  
Penny Barden  
Marlene & Frederick Barken  
Bill Barker  
Lawrence A. Barnes  
Dick & Bonnie Barney  
Danielle Barrett  
Donna & Joe Barrett  
Robert Barrett  
Thomas & Mary Kay Barrett  
Marilyn B. Bastian  
Richard V. Bates  
Beamish Family  
Dieder & Pamela Becks  
Charles D. Becraft & Darcy Bevelacqua  
Joe & Dee Dee Bedell  
W. Stewart Beecher  
Denise Beeners  
David Behm  
Dana & Leslie Benore  
Tim & Kandace Bergerstock  
Marc & Margie Berliant  
Tom & Lynn Binnert  
Katie & Rick Black  
Robert & Kathryn Blackburn  
David & Barbara Blaisdell

Barbara Block  
Barbara J. Blodgett  
Donna Bodner  
Bill Bohnert  
Steve & Nancy Boisvert  
Anita Bonanni  
Thomas & Lisa Bork  
Andrew & Kara Bosco  
Bob & Suzanne Bowdey  
Michael & Carol Bowie  
Doug & Brenda Brackley  
Bill & Joan Bradford  
Ellen & Joe Bradshaw  
Eric & Karen Bradshaw  
Bragan Family  
Bryan & Judy Braman  
Andrew & Nancy Brandston  
Tom & Virginia Braun  
John J. Brennan  
Charles & Sheila Briggs  
Joseph & Emily Briggs  
Mike & Sharlene Briggs  
Chris & Julie Brooks  
Dean & Steve Brown  
Tim & Terry Brown  
Fred & Mary Lourdes Brundige  
Kevin & Diane Bruns  
Barbara Buchanan  
Patricia Buchinger  
Gregg W. Buckwell  
Liudvikas & Pamela Bukys  
Eileen Burg, Scott & Leslie Burg  
Michael and Lisa Burns  
Sandra Burns  
Sean & Christine Burns  
Wolf Dieter and Sandra Busch  
Chris Cadden  
Peter & Carolyn Calkins  
Alexander & Sian Cameron  
Kim Canseco  
Philip & Bonnie Cardamone  
Al & Amy Carey  
Craig & Leslie Carlson  
Joseph & Becky Carr  
Allen Carstensen  
Mr. Jan Cary  
Elizabeth Casciani & Annette Kurzdorfer  
Ruth Furman Castillo  
Bruce & Sandy Castner  
Steve & Tammy Catherman

Nora Caulfield  
James Cedarstrand  
David & Patricia Cermak  
Tom Cervoni  
Nick & Mary Beth Charlap  
Joe & Lynn Charles  
Bob Childs  
Keith E. Childs  
Amy Christensen  
Karen Christensen  
Guy & Kathy Christiansen  
Lisa & Brian Christopher  
Drew & Nancy Chupalio  
Bruce & Tina Churches  
Peter & Kathy Ciccotelli  
Dianne Clark  
James & Eileen Clements  
Richard & Carolyn Clouser  
Patti Bandy  
Stephen Colby & Claire Stieg  
Martha Cole  
Barb & Bill Collins  
Bonnie & Daniel Collins  
Kris Colonna  
Bob & Kathy Colucci  
Thomas & Ann Comfort  
Carole A. Conlon  
Jean & John Conway  
Dr. Charles J. Cottone  
Barney & Sue Croft  
Richard & Jo Ellen Cronin  
Thomas & Sara Crosby  
Emily Crowley  
Mark Cuddy & Christina Selian  
Don & Nancy Curran  
Anne Currie  
Bruce Cutler  
Kimberly & John D'Amore  
Russ & Kristen Dack  
Lori & David Dahlberg  
The Daley Family  
Cathy & Paul Danielson  
Gail & Alan Davala  
Morgan Dawson  
Joyce Dean  
David & Kathryn deCaleta  
Gail Dede & Michael Mosca  
Nancy DeHaas  
Edward and Barbara DeJong  
The Viking

Thank  
you!

## KLA Membership Roster 2024



### PARTNER (\$50+)

Lynn & Don Delaney  
Rachel & Ray Dell  
Jim & Donna Dellamore  
Laurie & Paul DeLong  
Barbara & Craig Densmore  
Jerry & Donna Denton  
Branchport/Keuka Park Fire Department  
Gregory & Sara DeSmith  
Ted and Edie DeVoe  
Ted & Mary Ann Dhuy  
David & Melanie Dianetti  
Richard & Leah Dibble  
Kevin & Linda Dickinson  
Jon Diehm  
Carl & Karen Dietze  
David & Shelley Dinehart  
Charles & Betty Dinger  
Vincente & Diana Dingianni  
Edward & Julie Dix  
Rick & Lynn Dobosz  
Louis & Sylvia Dominick  
Theckla N. & Margaret A. Donegan  
George & Vicki Dornberger  
Joanne Drewno  
Josine Driscoll  
H.H & E.B. Dudley Trust  
Cameron & Helen Dunlap  
Delores Dunn  
Jon & Dona Durham  
Stephen & Carol Eberhard  
Bryon Eichorn  
Barbara & Richard Elliott  
Charles & Elizabeth Elliott  
John Ervin  
Harry & Eileen Erway  
Judy Erwin  
Evangelista Family Rusticana LLC  
Ed & Ann Evans  
Anis & Nadia Fadul  
Miles Family  
Kevin & Sally Farrell  
Rick & Julie Faulkner  
John & Tammy Felondis  
Dr. Howard & Marlene Fine  
Paul Fine  
Jim & Linda Fiorillo  
Russell Firman  
Peter Fisher  
Robert & Ann Fort  
Gene & Angela Foster

Tim & Ginna Francis  
Nance Francisco  
Gary French  
Henry Frey  
John & Linda Frey  
Karen Frey  
Barbara A. Friedrich  
Matt & Donna Fronk  
Ann Fullagar  
Ryan Furber  
Barbara & John Gaal  
Michael & Joan Gabrielli  
Arthur Gaisin & Kelly Falconi  
Barbara Gallagher  
Gallagher's Getaway  
Elizabeth Gammage  
Diane Gardner  
Marilyn Gardner  
Susan & Tom Gartland  
Arthur & Karen Geary  
Geertz Family  
Janet Gibbons  
Bruce & Edwina Gibbs  
Bill & Toni Gibson  
Deborah A Gibson  
Ken & Kris Gilbert  
Robert & Patricia Gilchrist  
Susan & John Gillan  
Jacqui & Tom Gilmore  
Leslie & Douglas Gilstrap  
Charles Githler  
James & Holly Gleason  
Keith & Lisa Glovins  
Amy & William Goldie  
Kevin & Claudia Goodreau  
David & Dorothy Graham  
Rick Grape  
Luanne B. Graulich & Terry K.  
Channing  
F. Michael & Lillian Gray  
Arthur & Joni Greene  
Karen & Mark Griffin  
Shawn & Amy Griffin  
Shirley K. Griffin  
James & Linda Grillo  
Cliff Manor, LLC  
Duane & Martha Grinnell  
Earl & Anne Grinols  
Bob & Karen Guinan  
Ken & Carol Guyett  
Charlie & Judy Hadeed

Barbara & Charles Hadley  
Jon & Sarah Hager  
William & Ruth Hague  
Steven & Kelly Hakes  
Jack Haley  
Scott Hall & Michelle Labossiere-Hall  
Ted & Becky Hall  
Carol & Kirk Hallenbeck  
Bill & Mary Hallinan  
Ray & Susan Hamilton  
Daniel & Mary Ellen Hamm  
John & Kelly Hamula  
Wayne & Christine Hand  
Tom & Carol Hanley  
Alma Harford  
David & Joan Harradine  
Bob & Carolyn Harrington  
Fred & Caroline Harrington  
Andrew Harris  
Nancy & Wayne Hartman  
David & Donna Hartney  
Tom & Deb Harvey  
Austin Hassett & Alice Murphey  
Dan & Judy Hays  
Mark & Mary Heard  
Chris & Maureen Hellems  
Daisy Heller  
David B. Hemenway  
Jack & Carol Hennessy  
Ken & Su Hershey  
Matthew J Herson  
Barbara Hickernell  
Jim & Linda Hicks  
Kathleen Hicks & Susan Croft  
Doug Hill and Irene Maffetore  
Kevin & Abigail Hoffman  
Mike & Pat Hoffman  
Mark & Marie Hollenbeck  
George Hollister  
John B. & Bonnie R. Hood  
Mr. and Mrs. William Hopper  
David Hostutler  
John & Jeff Housel  
Greg & Barb Howard  
John & Nancy Howard  
Pamela Howitt  
Glenn Hoy & Lisa Mattie  
Steve & Annabella Hoyser  
Joe & Nancy Hubertus  
Janet Hudiburg





## KLA Membership Roster 2024

### PARTNER (\$50+)

John & Patricia Huselton  
Gary & Susan Irvine  
Iversen Family  
Glen & Robin Jacobs  
Alison & Peter Jameson  
Jim & Nancy Jameson  
Edgar & Kelly Jelliff  
Mary Jo Jepson  
Charlie Johnson  
Chris & Joan Johnson  
David V. & Nancy A. Johnson  
Todd Jones  
19 Allen Street  
Margaret Joynt  
Gary & Sandra Junge  
Dave & Nancy Kallenborn  
Thomas Kane  
Ron & Barbara Karr  
Laurence & Diane Kasper  
Susan & Jeff Kath  
James Keena  
Kelly Family  
Maeve T Kelly  
David & Ruth Kennedy  
James Kerby  
Allen & Maxine Kidder  
Bill McGough & Anne Kiefer  
Frank & Diane Kiff  
Patrick & Anne Killen  
Kris & Renee Kinsley  
Don & Mary Klehr  
Nancy Rubel & Dan Klein  
Klemmer Family  
Alan & Carole Knapp  
Jeff & Sandie Koff  
Sarah C. Kostera  
Don & Joanne Kozlowski  
Anita Kramer  
Carl & Carol Krause  
Ray & Paula Kruk  
Mary Kubli  
Andrew Kurland  
Leigh & Gordon Lafferty  
Margaret Lalomia  
Donald Lando  
Bill & Colleen Lang  
Kurt & Heidi Lannon  
Dan & Mary Lapp  
Brian C. Larson & Bradley D.  
Kellett  
Linda & Richard Lawrence

Scott Learned  
Laura & Eric Leeper  
Steve & Kim Lefko  
K. Leiderbach & LL Brainerd  
William & Katherine Leonard  
Anthony & Michelle Lewis  
Margaret Lewis  
Malcolm & Lisa Lickers  
Miaw Chyung Lin  
David & Cathy Lindskoog  
Jeffrey Lippe  
Beth Litchfield  
Dave & Lynda Livingston  
Margaret Long  
Mr. and Mrs. James H. Long  
Marion C. Louden  
Heidi & Ron Lowenstein  
Sean and Megan Lucey  
Jeanne Lumadue & Adam Gilck  
Donna M. Lurz  
Juliane & Richard Maciejewski  
Katie & William MacIntyre  
Michael & Patricia Madigan  
H. Paul & Dace V. Madore  
Mark Magro  
Larry & Monica Malfitano  
Erin Maloney  
Michael A. Manahan  
Ken & Linda Mance  
Lorraine Manelis  
Douglas & Laura Mann  
Kathleen Mann  
Ronald D. Markle  
Brian Martin  
George & Marianne Martin  
John & Linda Martin  
Rob & Mary Ann Martin  
Doreen Massie  
Chris & Bill Masterman  
Michael & Judy Masters  
Joe & Cathleen Mathey  
Joe & Diane Matusek  
Chris & Scott McCarthy  
Dave & Debbie McCoy  
James F. McDonald  
Jeff & Barb McDowell  
Dale & Kathy McFiggens  
John & Mary Beth McGivern  
Thomas & Cynthia McGuire  
Kevin & Laura McGurgan

Bill McHenry  
Jon & Ann McKnight  
Roger & Jackie Mead  
Dave & Lynn Meaney  
Mike & Michele Meaney  
The Meaneys  
Maryann Mendel  
Wayne & Judy Mercer  
Robert & Linda Meredith  
Marlene & Michael Meyer  
Adele Middaugh  
The Middleton Family  
Anne Brenner & Mary Kessler  
Timber Frames Inc. - Alan Milanette  
Rick & Jo Ann Milazzo  
Cliff & Karen Miller  
Craig Miller  
Erich & Teri Miller  
Justine B. Miller  
Maggie Miller  
Paul G. Miller  
Ronald & Marguerite Miller  
Joseph & Marilyn Miran  
Trudy & Gene Mitchell  
Jim & Mark Moon  
Robert & Carolyn Moran  
Carol Moretti  
Charles W. & Judy W. Morgan  
Mary Ellen Morgan  
Christie & Brian Mosch  
Michael & Roxanne Mourhess  
Judie Mraz  
Tom & April Muccigrosso  
Michael Mulcahy & Diana Johnson  
Ron & Mary Mulhern  
Terrance & Karin Mulhern  
Dick Murphy & Mary Worth  
Joe & Mary M. Murphy  
Mark & Janet Murphy  
Martin R. Murray & Lia A. Crede  
Viki & John Mutarelli  
Richard & Sandra Mytych  
Gregory Naber  
Rodney & Linda Nangreave  
Susan Nashburn  
Rick & Connie Naugle  
Michelle & David Naylor  
Onalee Newman  
Caitlin Nichols  
Richard & Sandra Niles

Thank  
you!

## KLA Membership Roster 2024



### PARTNER (\$50+)

Emery Nordberg  
Janet Nykiel  
Todd O'Connell  
Gayle O'Connor  
Joseph & Anastasia O'Connor  
Mary Lou & Dennis O'Connor  
Dave & Chris O'Geen  
John & Diane O'Malley  
Steve & Lisa O'Malley  
Victoria Odenbach  
Bill Olmsted  
Paul & Karen Olynk  
Diane Opelt  
Laura Opelt  
Nancy & Glenn Orgeron  
Bob & Pam Ormsby  
Richard Osgood P.E. & Janet Osgood  
Lynn & Jorgen Overgaard  
David & Lorrie Owens  
Julie Pacheco  
Kris Packard  
Kim & Tim Paddock  
Daniel & Patricia Palmer  
Jim & Jean Parker  
Jeff & Gail Parrish  
Arthur Parsons  
Tim & Kate Parsons  
Dr. Kamal D. & Mrs. Pathak  
Jack & Barbara Paulson  
Bob & Carol Pavlik  
Bruce & Linda Payne  
Phillip Pearce  
Gail Pearson  
Bob & Nancy Pease  
Timothy Pease  
Ron & Joni Peck  
Jeffrey Peddigree  
Richard & Laura Pedersen  
Walter & Nancy Peek  
Bob & Betty Peer  
Tom Pellescki  
Brent Penwarden  
Horace Perry  
David Petersen & Sherry King  
Ms. Patricia Peterson  
Becky & Pete Petrucci  
Carol & Joe Peworchik  
Wayne & Lisa Peworchik  
Ann Phillips  
Bob & Martha Phillips

Dave & Jeanne Phillips  
David & Anita Phillips  
Ann Piato  
Stephanie & Steve Piccone  
Alan & Nancy Pierce  
Cheryl Pierce & Rob Ringer  
Tom & Jo Ellen Pinkham  
Ernie & Dolly Pipe  
Bob & Linda Pizzo  
Robert Plummer  
Marcia Podhorecki & Ed Hansen  
Raymond & Wilma Poehlein  
Robert & Geraldine Popp  
Tod Porter  
Ane Powers  
Lon & Pat Pritchard  
Mark Prunoske & Kimberly Shapley  
Charles & Brenda Pugliese  
Don & Mary Quant  
Dennis & Carol Quenan  
Lynn & Greg Ramsey  
Michael & Julie Rancourt  
Richard & Patricia Rapach  
Barbara Rarrick  
James Reagan  
Lucy & Frank Rees  
Marcia & Russ Rees  
Dolores H. Reynolds  
Harvey & Martha Rhody  
Jeff & Deb Rice  
Timothy & Dona Rickard  
Ralph & Lynn Ridolfino  
Tom Riggio  
Mark & Mary Robbins  
Peter & Carol Robbins  
Doug & Barbara Roberts  
Kenneth & Kay Robertson  
Cyndy Rochford  
Margaret Rogers  
Michael & Bette Rogers  
Jo Ellen Rollins  
Jim & Debbie Rolls  
Mary Jane & Glenn Rolls  
Kathy & Jeff Rosenheck  
Jerry & Heather Rossman  
Karen & Tim Rowe  
Suzanne Royer  
Jeff & Kelly Rubens  
Joan & Ron Rubin  
Anthony S. Ruocco & Mary L. Mayle

Mike & Barbara Ruth  
Rye Point, Inc.  
Kimberly Salisbury  
Lorraine Salters & Dan Kahm  
Linda Salyerds  
Stephanie Sanford  
Christopher & Amy Santy  
Clayton & Nancy Sauberan  
Kevin & Jackie Sax  
Dave & Lisa Saxton  
Jerry Saxton  
Judy Saxton  
Mike Saxton & Britt Frank  
Dick Schieck & Joan Semrau  
Dana & Helen Schillinger  
Mark Schlechter & Christine Valkenburgh  
Karin Schlossen & Heinz Weissenbuehler  
Henry & Barbara Schnepf  
Daniel C. Schoeffler  
Francis H. Schoeffler  
Jeff & Kathleen Schroeder  
Craig & Maria Schubmehl  
James & Sharon Schubmehl  
Mark Schuller  
Dr. Gregory L. Schultz  
Jeffrey & Ginger Schultz  
Edward & Barbara Schusler  
John & Yvonne Schutt  
Timothy A. Schwartz  
Carl J. Schwartz, Jr, Esq.  
Bruce Borglum & Joanne Searle  
Ron & Jody Seger  
Gary & Roseandrea Seivert  
Senges Family  
Mike & Laura Seppala  
Lillian & Scott Serafine  
Barbara A. Shank  
Richard & Jo Anne Shannon  
Penelope Shapiro  
Dinny Shaw  
Carol Shirley  
Kerry & LuAnn Simmons  
Neil & Joyce Simmons  
Sheila Simpson Allen  
Joseph Sirianni  
Bill Payne & JoAnn Smith  
Deborah A. Smith  
Jacqueline Smith  
Jason & Leigh Smith  
Scott & Roxie Smith





## KLA Membership Roster 2024

### PARTNER (\$50+)

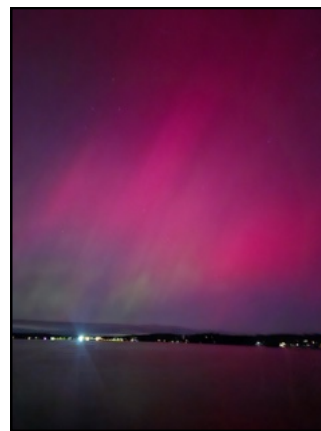
William & Barbara Smith  
William & Denise Smith  
James & Dorene Snyder  
Mrs. Ellen Snyder  
John & Jean Sobraske  
Beth & John Somers  
Stephen M. Sorensen  
Mary & John Sothoron  
Margaret Soule  
Vince Spagnoletti  
Glen & Kelly Spinelli  
Joe & Deanna Spitz  
6 Beakes Road  
Susan & John Spring  
Greg & Kathy Sprissler  
Gayle Stahl  
Linda N. Stark  
John Steeves  
Sharon & Mike Stefkovich  
Fred & Mabel Stehler  
Julie & Donald Steinbacher  
Christina & Dave Stocking  
Amy Stone  
Ruth & Alan Stork  
Stork Family Properties, LLC  
Ronald Stover & Cecily Fabrizio  
Clarinda Straub  
Dan & Karen Strauss  
Mike & Linda Streeter  
Marty Strong  
Patricia & Cynthia Strong  
Mickey Sullivan  
Roger & Amy Sumner  
Mary S. Sutherland  
Terri Sutherland  
John Svensson  
Jon Swartz  
Robyn Swatsburg  
Paul & Kristy Swistak  
Paul & Neyde Szych  
Bonnie Taggart  
David & Priscella Tallman  
Cindy  
Tom & Mary Tammaro  
Joan Tannen  
Laurie Tappel  
JO ANN UNGERLAND  
John H. Thomas  
Lynn & Michael Thomas  
David & Shelley Thompson

Douglas A. Thompson  
George & Heather Thompson  
John Thorpe  
Karen Tickner & Shellie Cook  
Joe & Bridget Tierno  
David Tierson  
Mike Tietjen  
Deb & Jim Tiftt  
Jennifer & Brian Tischler  
Keith & Annette Toasperm  
Bill & Carin Tobin  
Jim & Denise Toomey  
Taunja Townsend  
Katharine K Tracey  
Timothy Tredwell  
Tim & Margarita Trombley  
Dr. Bennie & Gail Truax  
Elaine Tunaitis & Raymond Dreher  
Christine L. Turner  
William W. Turner  
Nancy Tuttle  
Robert & Mary Ann Tyler  
Dave & Mary Uetz  
Terry Underhill  
Charles & Heidi Vail  
Scott & Maureen Valentine  
Scott & Sharon Valet  
John & Anne Van Aelst  
Jon & Minette VanDermark  
Stewart Vanburen  
Tom & Judy Vanbuskirk  
Donna & Bill VanderClock  
Karen VanDerEems  
Christopher Vaughan  
Richard & Debra Vega  
Mike Verostko  
Village of Penn Yan  
Maureen A. Vogt  
David & Marjory Voke  
Peter & Robin Voorhees  
Jane Vyverberg  
John Vyverberg & Judy Withers  
Joyce & Clark Wackerman  
Dr. & Mrs. John B. Wahlig  
David & Jodi Walker  
Leonard & Marilyn Walkowicz  
Paul & Marian Walrath  
Chris & Amy Walther  
Marie Waters  
David & Mary Ellen Watson

Mr. and Mrs. William A. Weber  
Howard & Sue Weiner  
Duane & Kathleen Weldon  
Dave & Liz Wernli  
David G. & Christine P. Weselcouch  
Jennifer Szymanski  
Kathryne Wheat & Family  
Diane M. Cecero & Mark Whelan  
While Away Keuka LLC  
Ellen White  
Larry & Irena White  
Dennis & Carmela Whitford  
Robert & Barbara Whitney  
Margaret & Skip Wiegand  
Beth Wilder  
Kay Wilder  
David Wilkins  
Ronald Wilkins  
Susan & Malon Wilkus  
Gary & Betty Williams  
Jeff & Brenda Williams  
Kimiko & Patrick Williams  
Lynn & Mike Williams  
Rodge & Janet Williams  
Don & Sandy Willmott  
Bob & Pam Wilson  
Don & Judy Wilson  
Stanley & Joyce Witkowski  
Paul & Susan Wojciechowski  
Gregory & Teresa Wolf  
Bill & Kathy Woodard  
Charles & Kathleen Woodcock  
Matt & Taylor Woodworth  
Gary & Suzanne Wren  
David Wurman  
Robert Wylie  
Thomas Yaeger  
Barrie & Nick Yanniello  
Gene Yaw & Ann Pepperman  
Bob & Sandy Young



# 2024 MEMORIES



# Keuka Lake's Top Realtor!

MARK'S CLOSED SALES PRODUCTION IS OVER  $\frac{3}{4}$ 'S OF A \$BILLION in his 33 year career!

contact:

**Mark Malcolm II**

Broker Associate • Century 21 NE

**315.536.6163**

email: mark@markmalcolm.com

**MARKMALCOLM.COM**

Call today for your **FREE Property Evaluation**



Support the Trades



- ✓ Custom Pile Driven Docks
- ✓ Boat Stations & Lifts Custom Built to Suit
- ✓ Commercial Diving & Salvage
- ✓ Over Water Equipment & Material Transport
- ✓ Sea Walls, All Types Available

**Steve Veley II**

Certified PADI Instructor

(607) 569-2340  
veleyent@gmail.com

PO Box 236  
8684 Coryell Road  
Hammondsport, NY 14840

*Serving Keuka Lake & The Finger Lakes Region for over 50 years!*

## THE BOATHOUSE K E U K A

**Full-Service Marina & Vacation Rentals**

- ✓ Full-Service Marina
- ✓ Vacation Rentals
- ✓ Slip Rentals
- ✓ Boat Repairs
- ✓ Fuel
- ✓ Dock Store
- ✓ Boat Storage
- ✓ Winterization Services

**(607) 569-2770**



info@boathousekeuka.com  
theboathousekeuka.com

PO Box 146  
35 West Lake Rd  
Hammondsport, NY 14840

## GOLF in the Finger Lakes



*Scenic Views of*  
**KEUKA LAKE**  
*just south of Penn Yan*

- 18 Hole Semi-Private Course
- No Initiation Fees
- Student & Social Memberships
- Driving Range & 2 Practice Greens
- Lessons from our PGA Pro
- Full-Service Pro Shop

**NEWLY PAVED CART PATHS!**

**LET'S PLAY PICKLEBALL!**

- 2 Pickleball Courts
- Pickleball Memberships
- Lessons & Tournaments

**Clubhouse & Restaurant, Covered Outdoor Deck Great for Weddings, Events & Private Parties**

Tee Times: 315-536-7252  
Clubhouse: 315-536-6251  
Business Office: 315-531-8847



**www.lccpy.com**

**145 Rte. 54 East Lake Rd • Penn Yan, NY 14527**





**BRIANNE KIRK**  
Keuka Lake Real Estate



Looking to sell or buy on Keuka Lake?



When you work with me, you will have access to my intimate knowledge of Keuka Lake, experience and success in pricing, timing and marketing. All brought to life with a hard working, hands on approach to sales!



- over \$100M in sales since 2020
- consistently Top 3 for buying & selling Waterfront on Keuka Lake
- Sold Keuka Lake's Most Expensive Home in 2022 at \$3.6M

Call 315-651-2572 [www.briannekirk.com](http://www.briannekirk.com)

an agent for [winetrailproperties.com](http://winetrailproperties.com)

## THE AFFORDABLE VACATION COMMUNITY ON KEUKA LAKE



**A unique summer retreat offering the opportunity to own a summer vacation home on Keuka Lake with DIRECT LAKE ACCESS!**

**CENTRALLY LOCATED** on the East side of Keuka Lake between Hammondsport and Penn Yan.

**CONTACT US NOW**  
*To Upgrade Your Summers*

**WWW.CAMPAREY.COM | 607.737.5233**  
[information@camparey.com](mailto:information@camparey.com)








**Locally Owned and Operated for Over 40 Years**

**Remodeling & Renovations**

**New Home Construction**

**Additions and Garages**

**Bathroom, Kitchens**




[www. DJBuilders.net](http://www.DJBuilders.net)

[Djames1912 @gmail.com](mailto:Djames1912@gmail.com)

(315)531-9074



The advertising section of the KLA newsletter is provided as a service to KLA members only.

The ads are restricted to 1/4 page, to fit into a 3.75 x 4.75 space. It is the responsibility of the advertiser to contact the KLA office with a request for ad space in an upcoming issue and send a print-ready, color ad in a JPG format only.

The deadline for the Spring 2025 issue is FEBRUARY 10th and will be accepted in the order submitted. However, in an attempt to present an interesting diversity of ads, the KLA editorial staff reserves the right to limit the number of any specific type of ad in any given issue. KLA also reserves the right to decline acceptance of an ad deemed inappropriate for the publication.

FRAN SPRINGER INTERIORS  
INTRODUCING THE "A. MERYL COLLECTION" OF CUSTOM MADE FURNITURE & BUILT-INS

Exemplary Design Custom Cabinetry & Kitchens Renovations  
www.FranSpringerInteriors.com  
585.244.6254

Let me introduce  
you to your  
**Lake  
Life!**

**“No one knows the lake  
better than Mike!”**

**Mike Hanna**  
Licensed Associate Real Estate Broker

**Howard Hanna**  
Lake Group  
HowardHanna.com  
Hammondsport, NY  
(607) 569-2020

**Call or E-mail me directly today!**  
607-684-0014 MichaelHanna@HowardHanna.com

**Dr. Konstantin Frank**

20+ YEARS SUPPORTING  
KEUKA LAKE ASSOCIATION

ESTABLISHED 1962

FOUR GENERATIONS  
FAMILY OWNED

OPEN YEAR-ROUND  
10 AM - 5 PM

DR. KONSTANTIN FRANK WINERY  
9749 MIDDLE ROAD, HAMMONDSPORT NY  
1-800-320-0735 | WWW.DRFRANKWINES.COM

**TIMBER FRAMES INC.**

Post and Beam Homes Locally Crafted  
in our South Bristol New York shop

We do custom homes, additions, porches, pergolas,  
stairs, mantels and timber element work.

5557 Rt. 64, Canandaigua, NY 14424  
585-374-6405  
www.timberframesinc.com  
Building the Finger Lakes since 1977

# Camp Arey Mini Storage

1040 East Lake Road, Dundee, New York  
 (State Route 54, Between Penn Yan & Hammondsport on the East side of Keuka Lake)

**OPEN TO THE PUBLIC IMMEDIATE OCCUPANCY**



5x10	\$40/mo.
10x10	\$60/mo.
10x15	\$75/mo.
10x20	\$90/mo.
10x30	\$130/mo.

- Month to month
- 1 Year Leases
- Rent to be paid in advance
- Deposit required



Fully lighted facility with 24/7 access

Contact Information:  
 Camp Arey, Inc.  
 1020 Center Street, Suite 4, Horseheads, NY 14845  
 607-737-5233  
 campareyministorage@ysnaisinc.com

*Keuka Lake Offices*  
**Penn Yan Office 315-536-2700**  
 229 Lake Street, Penn Yan, NY 14527  
 www.pennyan.howardhanna.com

**Hammondsport Office 607-569-2020**  
 52 Pulteney St., PO Box 542, Hammondsport, NY 14840  
 www.hammondsport.howardhanna.com



Mark Moon  
 Broker/ Owner  
 315-694-1229



Dick Murphy  
 Broker/ Owner  
 315-270-2002



Jim Moon  
 Broker/ Owner  
 315-694-1235



**Lake Group**  
**FIRST RATE REAL ESTATE**



**Quality Dock, LLC.**

qualitydockllc@gmail.com  
 315-536-6231

Custom made docks, rafts and mooring  
 Dock and hoist repairs and transports  
 Dock and hoist install and removals  
 Oak and I-beam seawalls

4 Corners, Branchport  
 315-595-2233

# Crooked Lake Mercantile

Seasonally Fluctuating Hours

The Original Home of "ALL THINGS KEUKA"  
 All your Fall needs in a friendly 1800's country store!

- In-Store Bakery • Deli Sandwiches
- Essential Groceries • Cozy Sweatshirts
- Keuka Apparel & Gifts • Fun PJ Bottoms
- Etched Glassware & Insulated Tumblers

crookedlakemercantile.com



**The Holiday Season is Fast Approaching**  
 Shop Early • Shop Local

Wifi 



# Curbeau Realty

Richard J. & Bonnie B. Curbeau

Licensed Real Estate Brokers / Owners

315-277-0237 or 315-277-0236

2463 Route 54A Penn Yan, NY 14527



View All Keuka Lake Listings at

[www.CurbeauRealty.com](http://www.CurbeauRealty.com)

Free Property Evaluation

Bringing Buyers & Sellers Together Since 1973

## BRAWDY MARINE CONSTRUCTION INC.

315-536-0546 BrawdyMarine.com

We Enhance Your Lakeside Living

Marine and Offshore Construction

Docks, Decks, Hoists Seawalls/Retaining Walls, Excavation, Sheds



*Thank you to all our 2024 Advertisers! We appreciate your ongoing support.  
Information about advertising with us in 2025 will be sent to all business members in January.  
Please contact our office if you are interested in becoming a member!*



THE KLA OFFICE IS LOCATED AT:  
2466 NY-54A, SUITE 207, PENN YAN, NY

Open hours fluctuate, so please make arrangements ahead of time if you'd like to stop by!

315-694-7324  
[INFO@KEUKALAKEASSOCIATION.ORG](mailto:INFO@KEUKALAKEASSOCIATION.ORG)

### KLA MEMBERSHIP PROCESS

FEBRUARY  
DUES RENEWAL NOTICES MAILED

APRIL  
MEMBER DUES DUE

JUNE  
LAST NEWSLETTER FOR THOSE  
WHO HAVE NOT RENEWED

**In 2025, all motor boat operators regardless of age will need a boating safety certificate.**

Approved courses include those offered by: NYS Parks and Recreation Dept, the US Coast Guard Auxiliary, the US Power Squadrons, or US Powerboating.

Boating Safety Classes at Steuben County Sheriff's Office  
December 14th 8am-5pm  
January 4th 8am-5pm  
February 8th 8am-5pm



**2025 CALENDARS AVAILABLE:**

LONGS', ARTS CENTER OF YC,  
BROWSERS, CROOKED LAKE  
MERCANTILE, HUNT COUNTRY,  
VINEYARDS, PARK PHARMACY,  
CINNAMON STICK



**KLAeidoscope of Keuka 2026- Calendar Photo Contest**  
**YOUR PHOTO COULD BE IN THE 2026 CALENDAR!**

Keep your camera handy throughout the year, as photos are needed for all seasons. Photos must be of Keuka Lake or its shoreline, hillsides and communities. Photos must be taken by KLA members or members of their families.

**Entries must be received by March 31, 2025.** Limit 3 photos per entrant. All photos need to be horizontal to fit a calendar page. Digital photos should be taken with a 3.5 mega pixel or larger camera, at highest possible resolution. You may re-submit photos that were previously not selected. After uploading the image to your computer, save it as a .jpg file, leave it unedited, and **visit the 'Gallery' tab on our website to submit through our online form.**

Remember, prizes are available for the cover, back, 1st, 2nd and 3rd place photos and selected submissions receive a copy of the calendar. Photos not selected for use in the calendar may be placed in the photo gallery on the KLA website or in the newsletter. Past entries may also be considered for use in future calendars.



# KLA MEMBER APPLICATION



*Yes, I want to support the Keuka Lake Association!*

New \_\_\_\_ Renewal \_\_\_\_

NAME(S) \_\_\_\_\_

MAILING ADDRESS \_\_\_\_\_

CITY, STATE, ZIP \_\_\_\_\_

PHONE NUMBER \_\_\_\_\_

E-MAIL ADDRESS 1 \_\_\_\_\_

E-MAIL ADDRESS 2 \_\_\_\_\_

KEUKA ADDRESS \_\_\_\_\_

CITY, STATE, ZIP \_\_\_\_\_

KEUKA PHONE \_\_\_\_\_

Dates I wish to receive mailings at KEUKA address: From \_\_\_/\_\_\_ thru \_\_\_/\_\_\_ (month/day)

Would you like to receive E-Announcements and our monthly E-Newsletters? Yes/No

How would you like to receive our Quarterly Printed Newsletter? Mail/E-mail/Both

	<i>Membership Level</i>	
\$50	Partner	
\$100	Sponsor or Business	
\$150	Patron	
\$250	Guardian	
\$500	Champion	
\$1000	Premier	

Check # \_\_\_\_\_ (Please make checks payable to the Keuka Lake Association)

Credit Card number: \_\_\_\_\_

Expiration Date: \_\_\_/\_\_\_/\_\_\_ Signature: \_\_\_\_\_

Please mail application and payment to: KLA, PO Box 35, Penn Yan, NY 14527

*Thank you for your support!*





# KLA ORDER FORM



NAME(S) \_\_\_\_\_  
 MAILING ADDRESS \_\_\_\_\_  
 CITY, STATE, ZIP \_\_\_\_\_  
 PHONE NUMBER \_\_\_\_\_  
 E-MAIL ADDRESS 1 \_\_\_\_\_  
 E-MAIL ADDRESS 2 \_\_\_\_\_  
 KEUKA ADDRESS \_\_\_\_\_  
 CITY, STATE, ZIP \_\_\_\_\_  
 KEUKA PHONE \_\_\_\_\_

Please select:

6"X12" DOCK PLATE \$35  
INCLUDING S&H



8"X12" DOCK PLATE \$45  
INCLUDING S&H



FILL IN  
#S



**License Plate Holders: \$8 including S&H \_\_\_\_\_**

Check # \_\_\_\_\_ (Please make checks payable to the Keuka Lake Association)

Credit Card number: \_\_\_\_\_

Expiration Date: \_\_\_/\_\_\_/\_\_\_ Signature: \_\_\_\_\_

Please mail application and payment to: KLA, PO Box 35, Penn Yan, NY 14527

*Thank you for your support!*

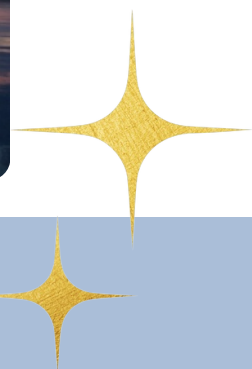
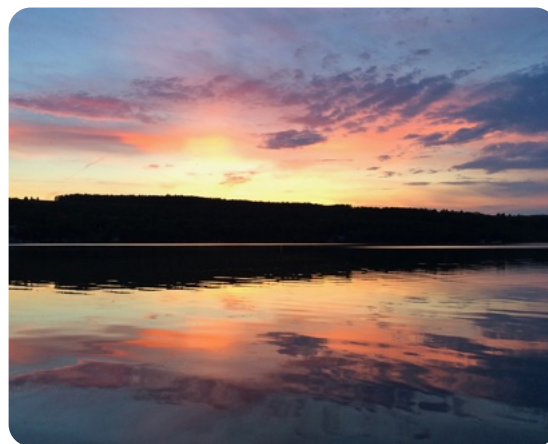




Keuka Lake Association 2466  
NY-54A, Suite 207  
PO Box 35 Penn Yan, NY 14527



*Our mission is to  
preserve and protect  
Keuka Lake and its  
natural beauty for  
future generations.*



LISTEN TO THE LAKE...

